



ADVAN

Sport V107

Nothing Compromised



Wet



Dry



Comfort



High Grip



High Speed



Handling

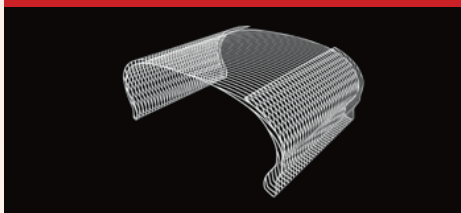


Asymmetric

Asymmetric Tread Pattern

Carrying on cutting-edge technology

High-rigidity rayon carcass material



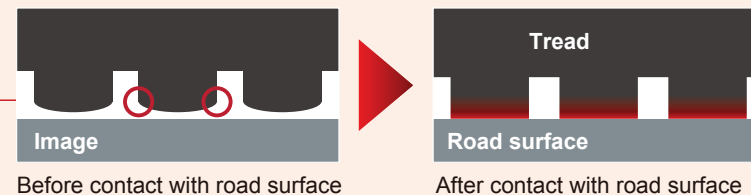
Matrix Body Ply Structure Enhances Steering Stability

Improves precision in steering without compromising comfort. Contributes to excellent performance in the dry by conveying power to the road's surface.

Variable Width Circumferential Grooves

Employs wider 3+1 main grooves. Displays exceptional hydroplaning resistance at high speeds.

Wide straight groove enable drainage performance. Displays exceptional hydroplaning resistance at high speeds.

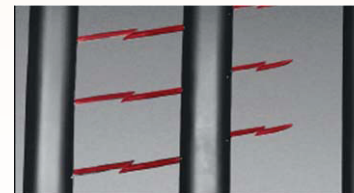


High-Rigidity Wide Shoulder

Significantly improves pattern rigidity at ultrahigh speeds and realizes powerful grip in the dry.

Silent Sipe Reduces External Vehicle Noise

Newly shaped silent sipes located along the ribs control noise and reduce external vehicle noise.



Improved pattern rigidity through wide shoulders and greater road contact area ensure enhanced performance in the dry.



Strong Grip Performance

Expanded road contact area offers stronger grip

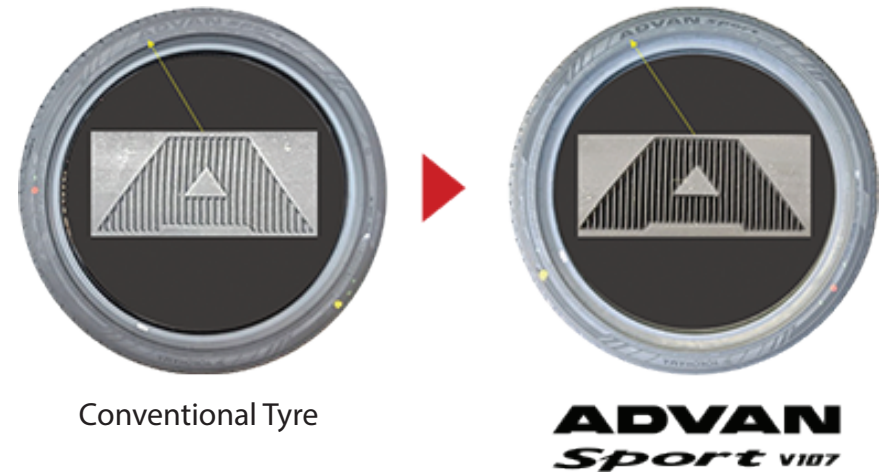
In order to provide stronger grip performance, the contact shape of the tyre is square, which increases road contact area. This is largely achieved by both the block area and groove area.



Premium Design With YOKOHAMA Crafting

Premium design on the sidewall

A special tooling process in the molds combined with the YOKOHAMA group's unique expertise has led to the development of stylish dark design. This solution has made it possible to create contrast on certain sections of the outer sidewall. Improves visibility and enhances car's design and beauty just as much as functionality.



Dedicated to SUV sizes

Although it is not a special designed tyre for SUV, but SUV is marked on the sidewall to distinguish SUV size from PC size.



SUV marking on the