



BluEarth-RV_{RV03}

***A BluEarth grand touring tyre
tuned for CUVs & MPVs***



Wet



Silence



Handling



Comfort



Mileage



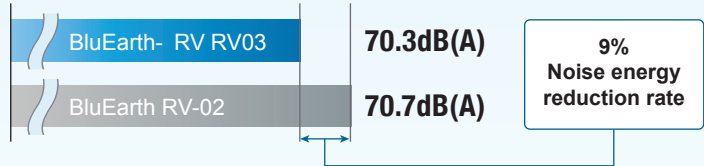
Fuel Saving

Improved Quietness and Considerations Designed for MVPs

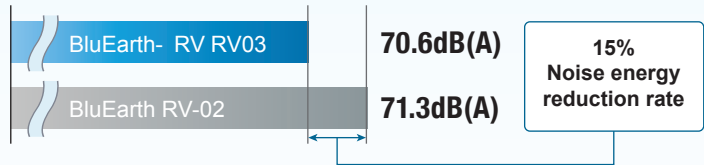


BluEarth-RV RV03 Performance chart

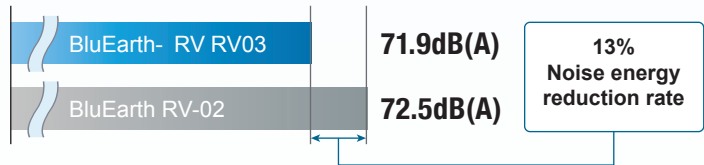
▶ Road noise driver's seat



▶ Road noise second row of seats

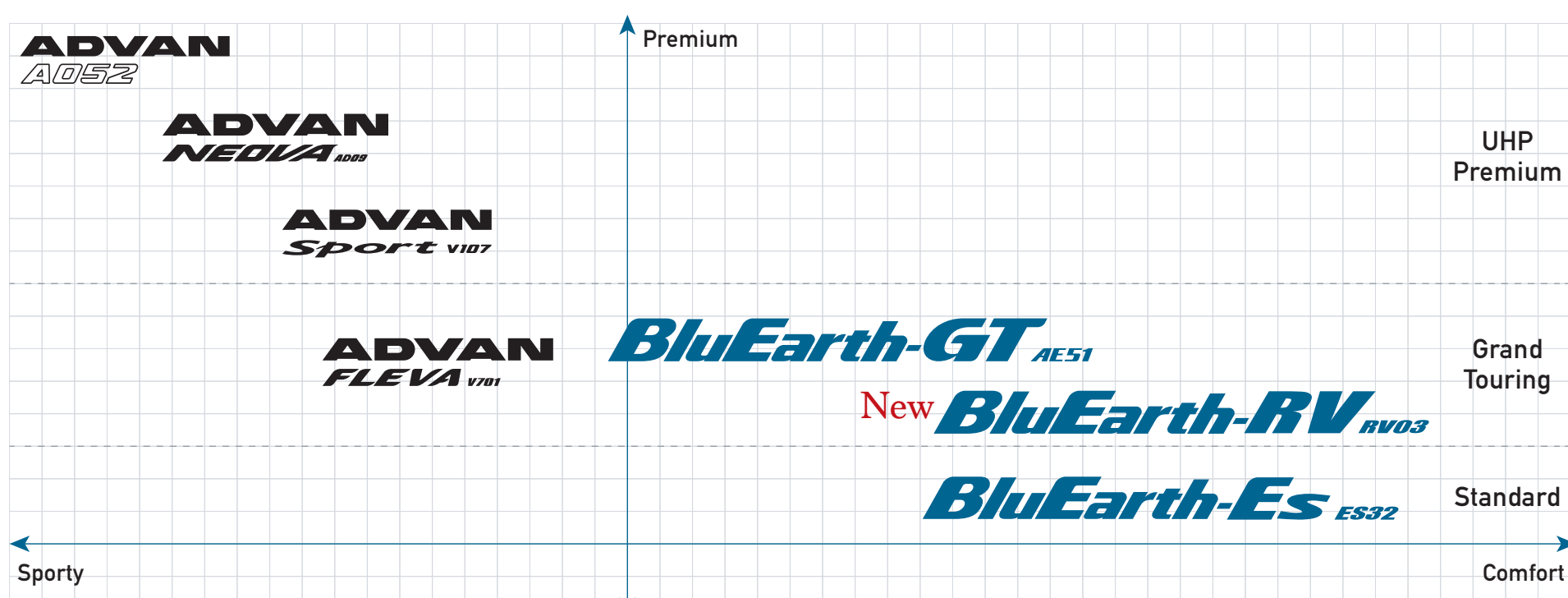


▶ Road noise 3rd row of seats

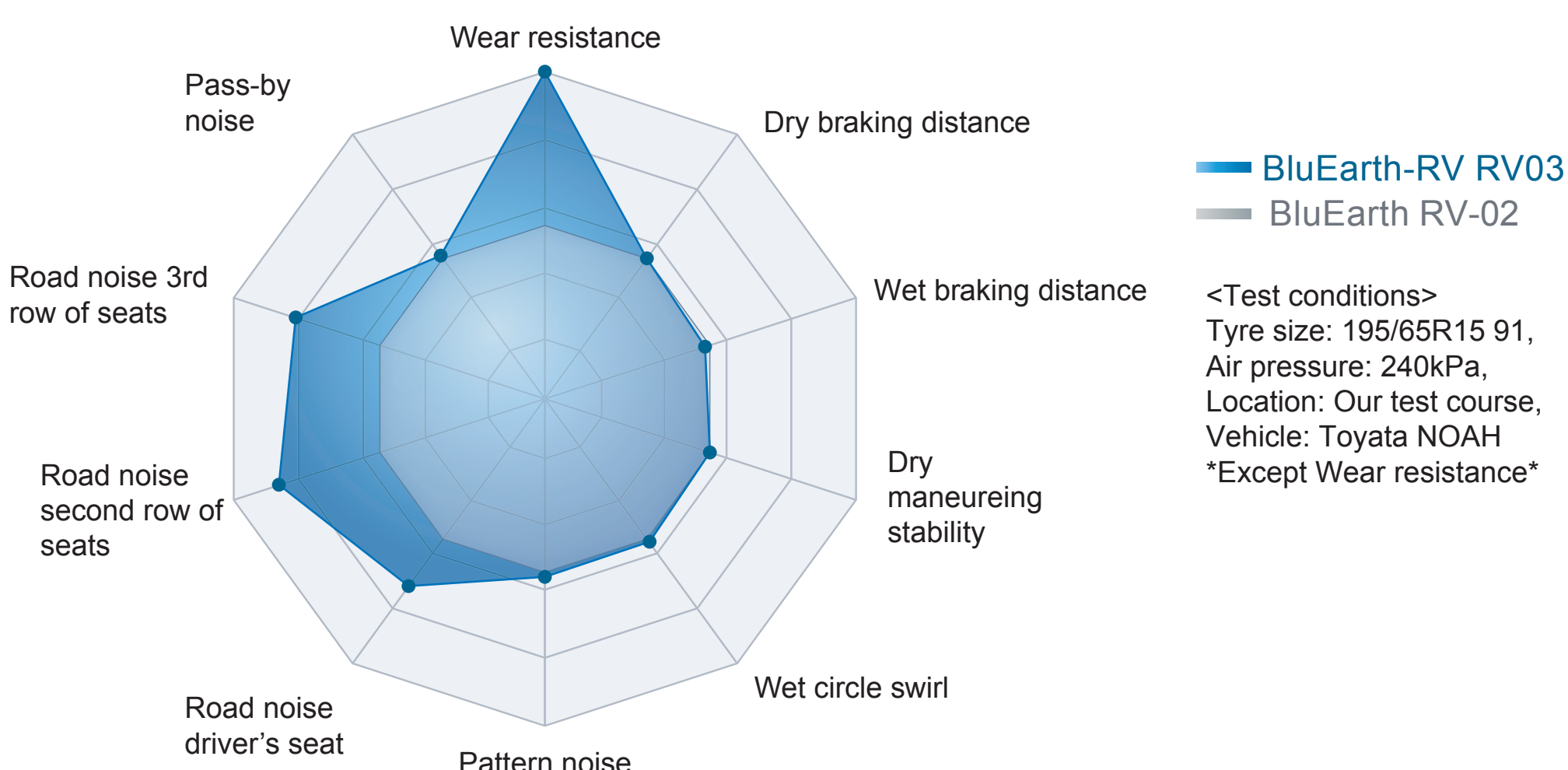


<Test conditions>
 tyre size : 195/65R15 91H, air pressure : 240kPa,
 location : Our test course, vehicle : Toyota NOAH

Position



Performance Chart



Technology - Tread Pattern

- Suppresses wobbling
- Suppresses uneven wear
- Quiet

Reducing in the area ratio of grooves reduces the loss of handling stability.

High rigidity shoulder

Resist uneven wear
Excellent steering stability



Two wide ribs

Excellent steering stability



High rigidity sipes

Suppress noise Resists uneven wear



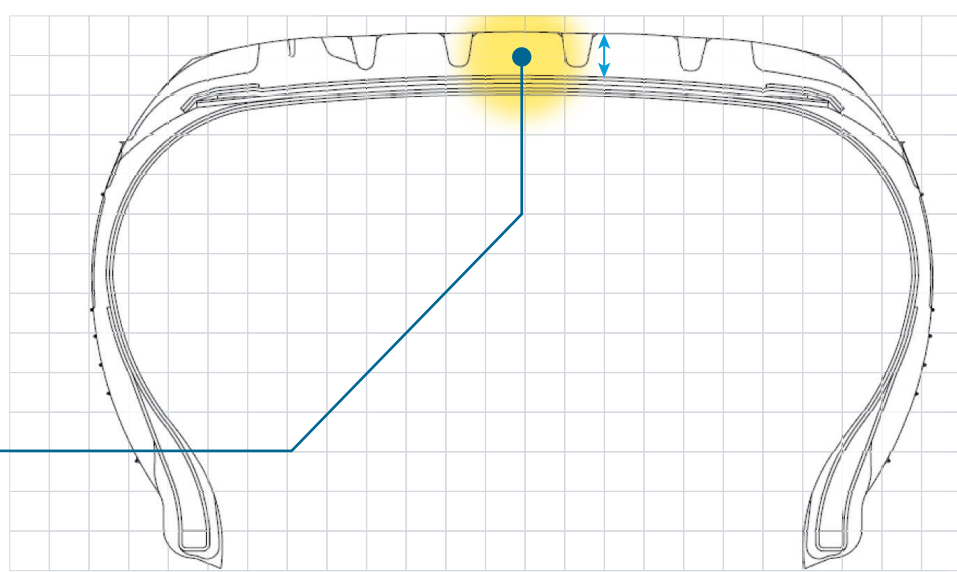
Technology - Construction

Designed for an even quieter ride

Made with a softer rubber compound than the RV-02 to effectively reduce noise.

Quiet

Achieves improved road noise performance by thickening the rubber of the tread and increasing the amount of rubber compared to RV-02



Technology -Tread Pattern

- Wet performance
- Wear resistance

Diagonal cut grooves

Excellent Wet performance



Four straight grooves

Anti-hydroplaning



Technology -Tread Compound

Wet performance

Based on the newly adopted compound mixing technology "A.R.T. Mixing" Realization of high-dimensional wet braking.

Better silica dispersion than conventional mixing technology. Braking distance in wet conditions is reduced with the same compound.

