

**ENKEI Sport**  
**RC-G5**



More than 40 years after the first gravel wheel was released, the “RC-G5” continues to evolve with feedback from actual races such as the WRC.

Rigidity and strength in the load direction and lateral G direction are maintained at the highest RC-G4 level ever, while the rigidity in the rotational directional direction (during acceleration/deceleration) has been increased in addition, by optimizing the thickness and inner shape of the rim for each size spec, the clearance with the brake and suspension has been expanded.

**Sizes:** 15 inch  
**Colour:** White

**Material:**



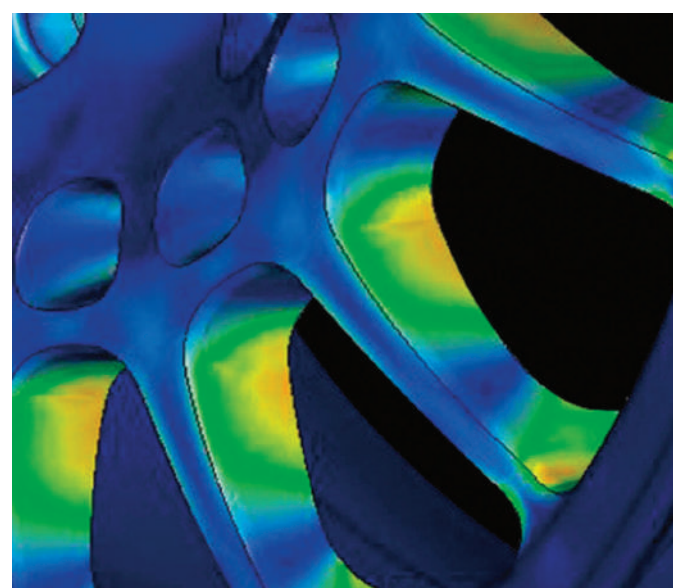
**Main Feature:**



## Product Detail

### Increased Rotational Rigidity

Increased rigidity during acceleration/deceleration. Rigidity and strength in the load direction and lateral G direction are maintained at the highest RC-G4 level ever, while the rigidity in the rotational direction (during acceleration/deceleration) has been increased.



### Increased Brake Cooling

Improve cooling of brake heat. A new design that takes into account the heat dissipation of the brake rotor while preventing the intrusion of gravel etc. at the disc center.



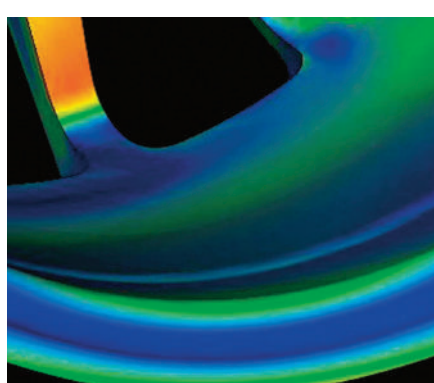
### Easy Clean

Incorporating opinions from the site where dirt tends to accumulate due to gravel competition and frequent cleaning, we reviewed the shape of spoke base and details to improve soil removal compared to conventional products.



### Improved Brake And Suspension Clearance

Increased clearance with brakes and suspension. By optimizing the inner shape of the rim for each size spec, the clearance with the brake and suspension is expanded.



### Additional Features

- Improved detachability by changing the hub bolt hole shape.
- VO caliper compatible.
- The knurled shape of bead seat has been improved to further reduce the spinning of the tyre and rim at low tyre pressure.

