



GEOLANDAR X-CV

***The All New Performance A/S
For Crossover SUV***



Wet



Silence



Comfort



Mileage



Fuel Saving

Tread Pattern Technology

Asymmetric Pattern

Asymmetric pattern – 3 rib design and In/Out shoulder block

- WET
- Snow
- Low Noise

4 Wide Straight Groove

4 Wide straight groove effects Wet and Hydroplaning

- WET

Benefit

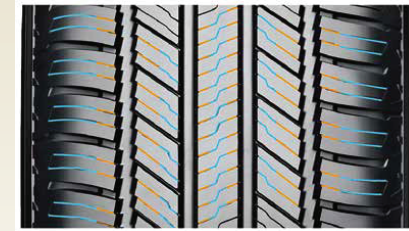
- Better traction and noise
- Traction at slippery surface



2-3D Combination Sipes

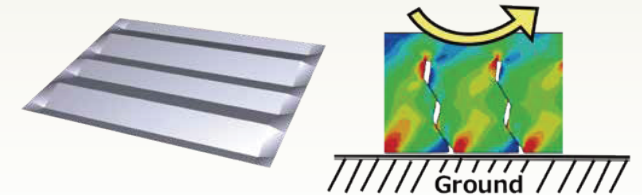
2D, 3D Combination Sipes are good for traction and mileage

- WET
- Snow



■ 2D sipe ■ 3D sipe

3D Sipes



Benefit

- Better wet and snow traction
- Better mileage

Profile And Contact Shape

Wide and flat contact shape
- Even wear Better Mileage.



PARADA Spec-X



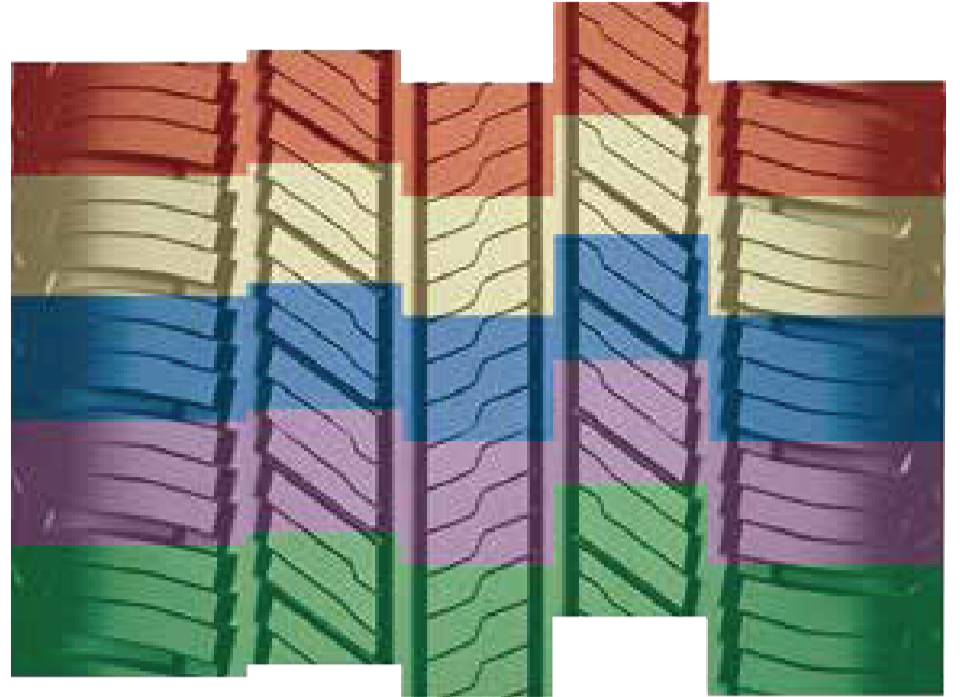
Geolandar X-CV

Benefit

- Even Wear
- Long Mileage

5 Pitch Variation

5 Pitch Variation block enable lower noise.



Benefit

- Lower noise

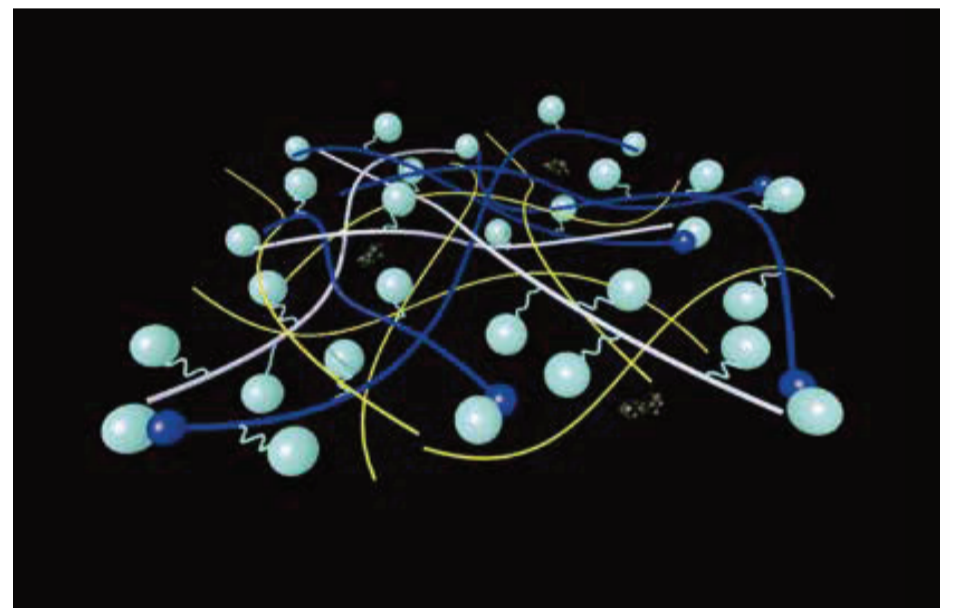
Compound Technology

The feature of tread compound is good performance balance wet and snow.

- Micro Silica Keeps stability at dry performance
- Silica End-locked polymer is not only improving silica dispersion for wet performance but also keeping compound soft for good snow performance. Additionally this polymer reduce energy loss of compound for Rolling Resistance.

Benefit

- Wet and Snow Performance
- Low Rolling Resistance



Side Design



- Dented logo
- Sidewall 2PLY construction

Benefit

- Even Wear
- Long Mileage

