



# ***GEOLANDAR A/T G015***

***High Dimension All-Terrain Tyre***



Wet



Silence



Comfort



Mileage



Dirt

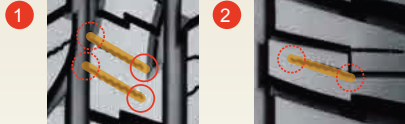
# Greater Durability And Longer Life

## Excellent Wet Grip And Off Road Traction

### 3-D Shaped Sipes

The tyre employs uniquely developed 3-D shaped sipes. The sipes, which are shaped into a three-tier pyramid, suppress breakdown of the tread block. This contributes to exceptional stiffness on dry surfaces and outstanding edge effects on wet surfaces.

#### Arrangement



Edge effects

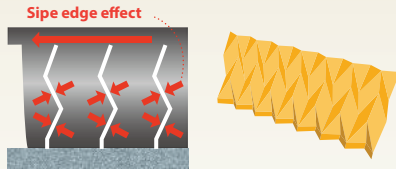
Suppressing uneven wear

Opened: ○ Closed: ○

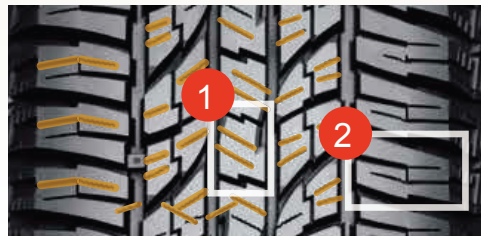
#### Shape

##### New 3-D shaped sipes

Improved wear resistance by ensuring edge effect provided high-level driving performance and block rigidity.



Middle Block  
Center Block      Shoulder Block



### 4 Deep Main Grooves

The four wide, straight grooves enhance drainage performance and provide exceptional maneuverability and anti-aquaplaning capabilities on wet surfaces

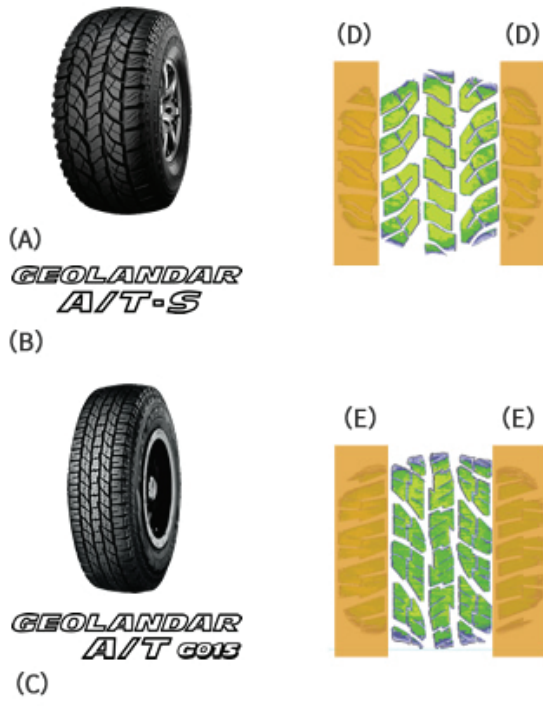
### Optimized Lug Groove

For the design, the lug grooves get narrower as they approach the center section and gradually wider as they approach the grounded edge of the shoulder. This helps to beat down off-road surfaces for greater traction



## Profile

We enhanced the road-hugging properties of the shoulder and lug grooves. This ensures exceptional traction in off-road conditions. Optimizing the shape of the entire grounded portion of the tread also improves wear resistance.



- (A) Conventional product
- (B) The grounded part of the tread center is long and the shoulder part is comparatively short.
- (C) The grounded part of the tread center has been shortened and the road-hugging property of the lug groove section of the shoulder has been improved.
- (D) Narrow
- (E) Wide

## Aggressive Shoulder

The design of the shoulder section has been overhauled as well. In addition to improving the tyre's follow-up durability, the appearance gives an aggressive feel.



## Excellent Wet Grip And Off Road Traction

### 4 Deep Main Grooves

The four wide, straight grooves enhance drainage performance and provide exceptional maneuverability and anti-aquaplaning capabilities on wet surfaces



### Optimized Lug Groove

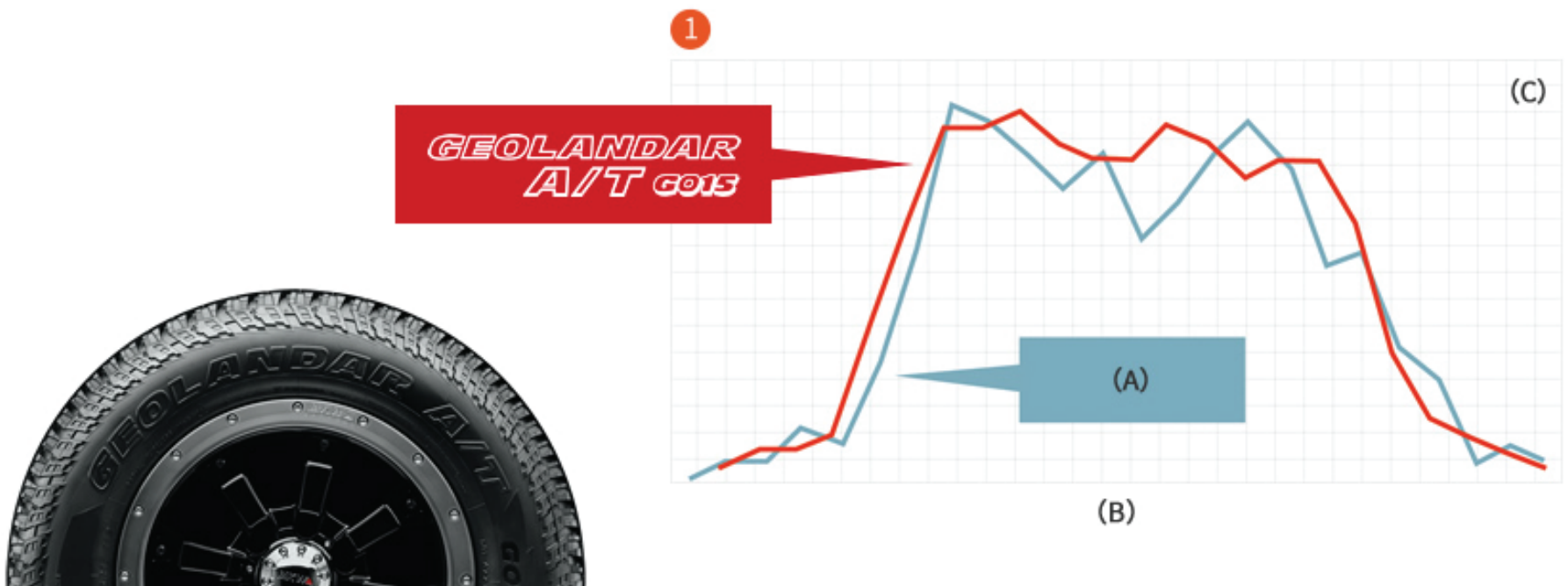
For the design, the lug grooves get narrower as they approach the center section and gradually wider as they approach the grounded edge of the shoulder. This helps to beat down off-road surfaces for greater traction.



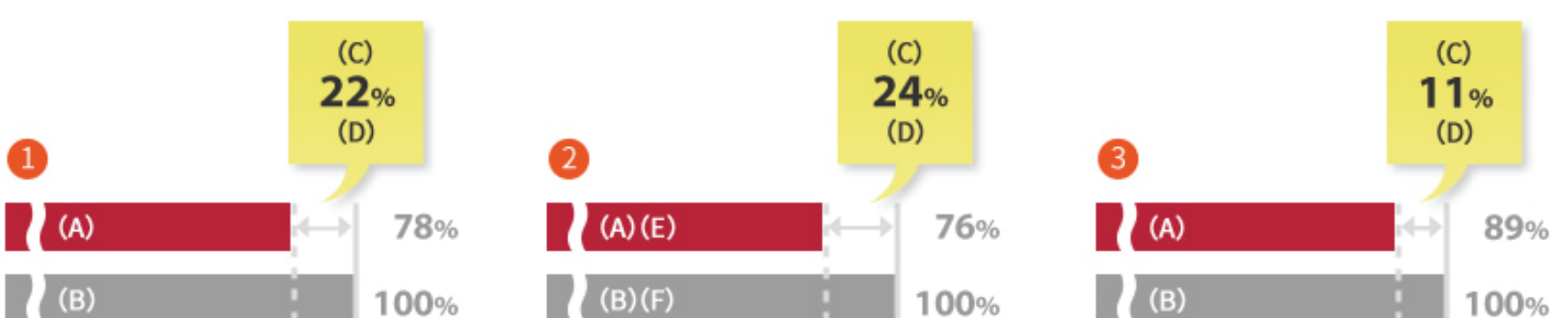
## Achieves Both Maneuverability And Comfortable Driving

### New Pitch Variation

Rather than have uniform block pitch in a circumferential direction, the tyre employs pitch sequence of differing size. The frequency of the pitch is dispersed to reduce pattern noise. There is also less burden on the block, which contributes to a reduction in uneven wear.



1. Comparison of peak distribution in pattern pitch component
  - (A) Our conventional product (G012)
  - (B) With the GEOLANDAR A/T G015, the frequency peak of the pitch component is smaller.



1. Pattern noise
  2. Pattern Noise when Worn (After 12,212km)
  3. Road Noise (Inner ear, rear seat)
- (A) GEOLANDAR A/T G015 (B) Our conventional product (G012) (C) Reduced by (D) Noise energy reduction rate (E) : wear rate 14.1% (F) : wear rate 16.5%