



# ***BluEarth-GT* AE51**

**GRAND TOURING**



Wet



Dry



Silence



Comfort



Mileage



Fuel Saving

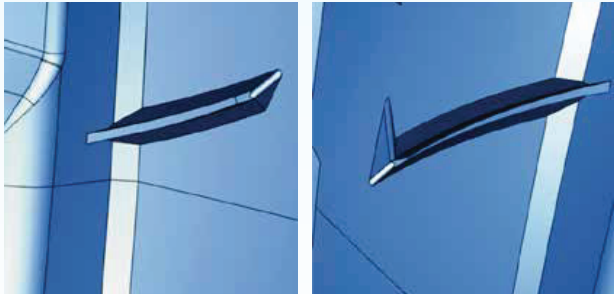
# Newly-Developed High-Rigidity, Asymmetrical Pattern For Spirited Driving

## Triple Center Rib

Highly rigid triple rib ensure straight-line stability at high speeds.

## Blade Cut Sipes

Turned rigidity with blade-image sipes.



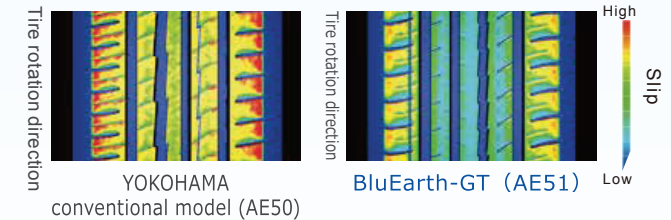
## Lightning Grooves

Increasing total edge volume, improving grip performance.

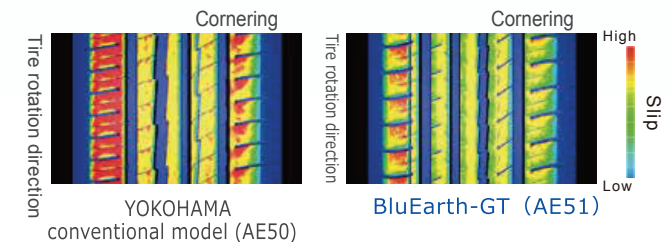
## Simulation

Calculating Slip and Increasing Stability.

## Straightaway



## Cornering

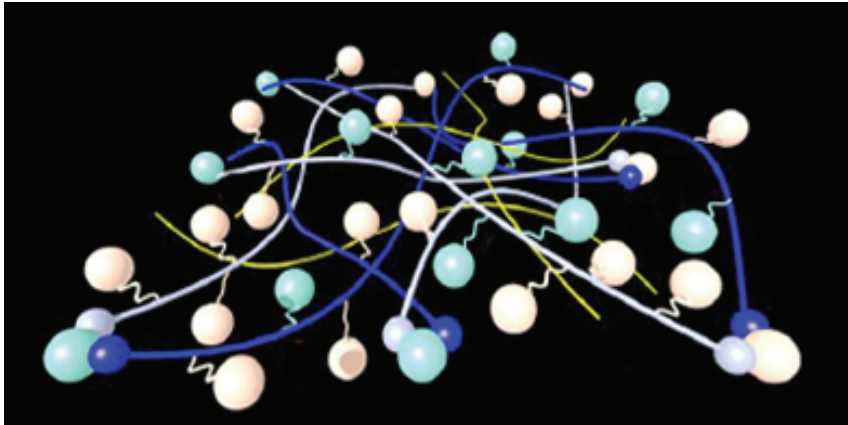


# Compound

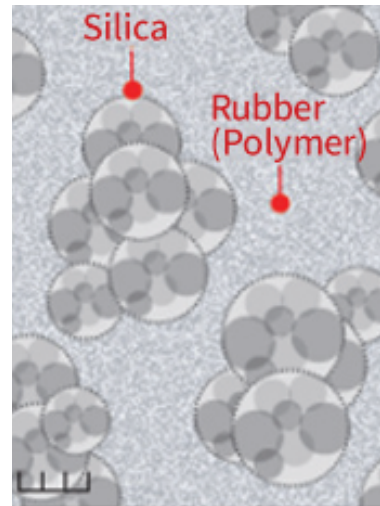
## Unique “A.R.T.” Rubber Blending \*Advanced Reaction Technology in Mixing

A rubber blending technology called “A.R.T. Mixing” significantly improves the dispersion of silica compared to conventional blending technology.

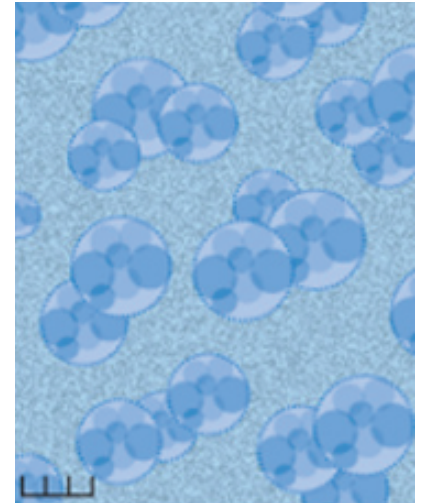
The Compound's Molecular Structure



Conventional model (AE50)



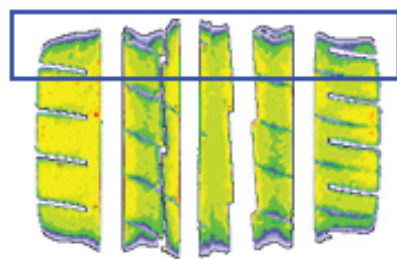
BluEarth-GT (AE51)



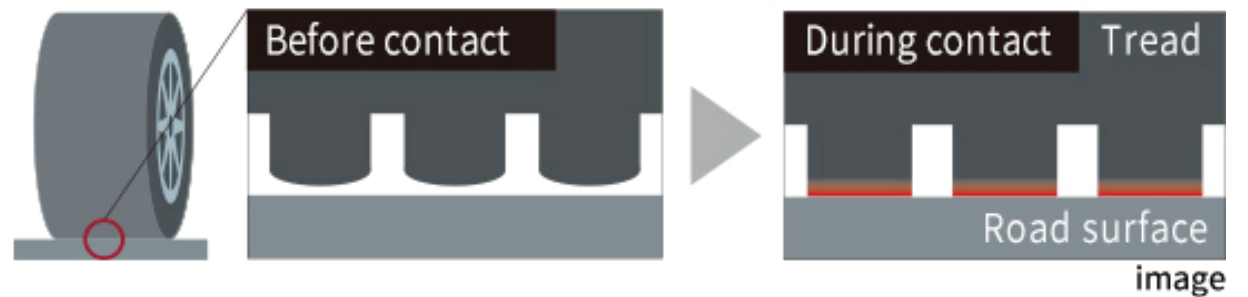
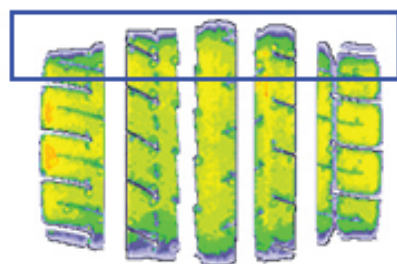
# Tread Profile

Excellent Straight-line Stability

Conventional model (AE50)



BluEarth-GT AE51



# Construction

AE51's advanced construction achieves both light weight and high durability.

